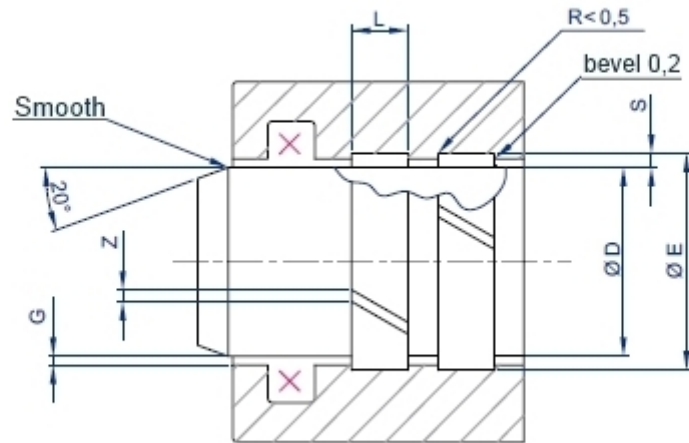


## Guide rings |FR rod guide rings



Heavy duty conditions. Installed in the same housing as for FT and Neuflon-ptfe tape.



## SEAT

<b>S</b> Thickness	<b>F</b> Groove diameter	<b>L</b> Groove width	<b>G</b> Rod-Box clearance
	<b>J8 - H8</b>	<b>H11</b>	<b>max S x 0.4</b>
<b>2.5</b>	<b>D + 5</b>	<b>6.3</b>	depends from the seal adopted <b>max S x 0.4</b>
<b>2.5</b>		<b>8.1</b>	
<b>2.5</b>		<b>9.7</b>	
<b>2.5</b>		<b>15</b>	
<b>2.5</b>		<b>20</b>	
<b>2.5</b>		<b>25</b>	
<b>2.5</b>		<b>30</b>	

### Coding example

Product: FR  
Groove diameter: 105  
Rod: 100  
Groove width: 15

**FR 105 x 100 x 15**



## MATERIALS

CHARACTERISTIC	SPECIFICATION	UNIT	VALUE
Color			brown-yellow
SPECIFIC LOAD $Q_s$ $T < 100^\circ\text{C}$		N.mm-2	50
Compression resistance	D695-54	N.mm-2	150
Compression modulus	D695-54	N.mm-2	6000
Hardness	D2240-74	Rockwell F	60
Friction coefficient			0.25
Max. Speed		m/sec	1
Thermal expansion coefficient	D696-70	$10^{-6} \text{ } ^\circ\text{C}^{-1}$	20
Continual operational Temperature		$^\circ\text{C}$	120
Peak temperature		$^\circ\text{C}$	150
Flammability	D635-68		self extinguishing