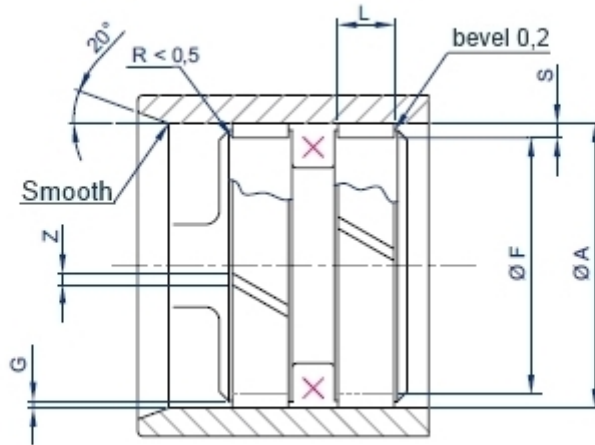


Guide rings | FT piston guide rings



FT WEAR RINGS. Polyester resin and fabric wear rings. For high loads. Available in a wide dimensional range. Installation in the same housing as for Neuflon-ptfe compound band and FR rings.



SEAT

S Thickness	F groove diameter	L groove width	G piston-cylinder clearance
	j8 - h8	H11	max S x 0.4
2.5	A - 5	6.3	max S x 0.4 according with the seal adopted
2.5		8.1	
2.5		9.7	
2.5		15	
2.5		20	
2.5		25	
2.5		30	
2.5		40	
4.0		A - 8	

Coding example

Product: FT
 Bore: 100
 Groove diameter: 95
 Groove width: 15

FT 100 x 95 x 15



MATERIALS

CHARACTERISTIC	SPECIFICATION	UNIT	VALUE
Color			blue
SPECIFIC LOAD Q_s $T < 100^\circ\text{C}$		N.mm-2	75
Compression resistance	D695-54	N.mm-2	340
Hardness	D2240-74	Rockwell M	100
Friction coefficient			0.2
Max. Speed		m/sec	1
Thermal expansion coefficient	D696-70	10-6 / $^\circ\text{C}$	20
Continual operational Temperature		$^\circ\text{C}$	130
Peak Temperature		$^\circ\text{C}$	150
Flammability	D635-68		self extinguishing